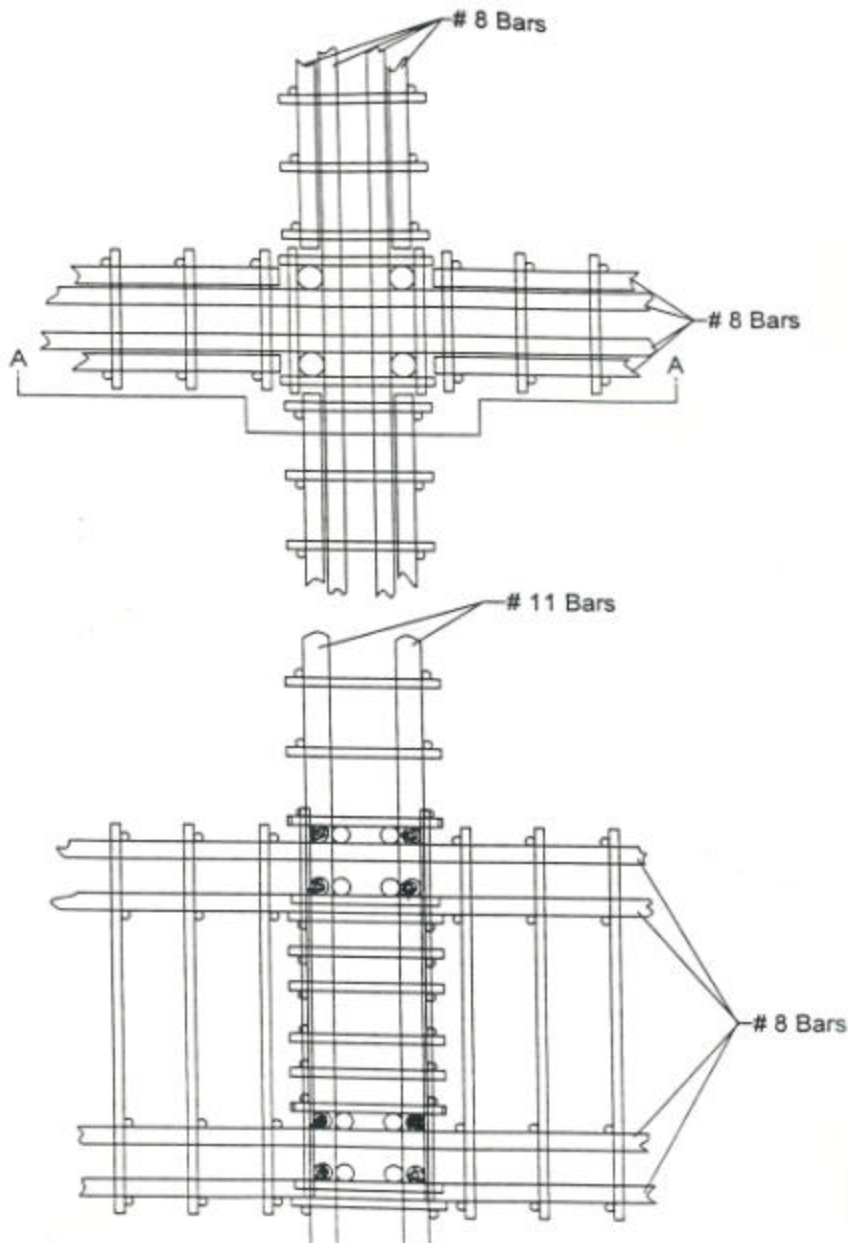


BauJoint



The BauJoint has been developed to speed construction and reduce rebar congestion. Closely spaced BauGrids in the BauBeam act as both stirrups to resist shear stresses and as confinement reinforcement, to provide a very ductile BauJoint.

The BauJoint allows off-site prefabrication of BauColumn and BauBeam BauCages. The BauBeam BauCages will have BauBeam BauSpliceBars riding loose in the BauBeam BauCage.

At the site, the BauBeam BauCages are positioned next to the BauColumn BauCage. The BauSpliceBars are then quickly moved from the BauBeam BauCage and charged through the BauColumn BauCage into the BauBeam BauCage on the opposite side of the BauColumn BauCage.

The same BauBeam BauCage erection process can be done for a two-way BauJoint.

Closely spaced BauGrids in the BauColumn BauCage resist the high bond shear stresses occurring at the BauSpliceBars when the BauJoint is resisting lateral forces. For BauJoints with very high shear forces, the BauBasketweave BauJoint can be used.

Contrary to conventional design practices the BauSplicebars in the BauJoint are designed to transfer large moments in the BauBeam at the face of the BauBeam at the face of the BauColumn where the plastic hinge will form during a violent earthquake.

Closely spaced BauBeam BauGrids in this plastic hinge zone will continue to confine the concrete surrounding the lapped BauSpliceBars and the BauBeam rebars during the earthquake as the plastic hinge is formed.