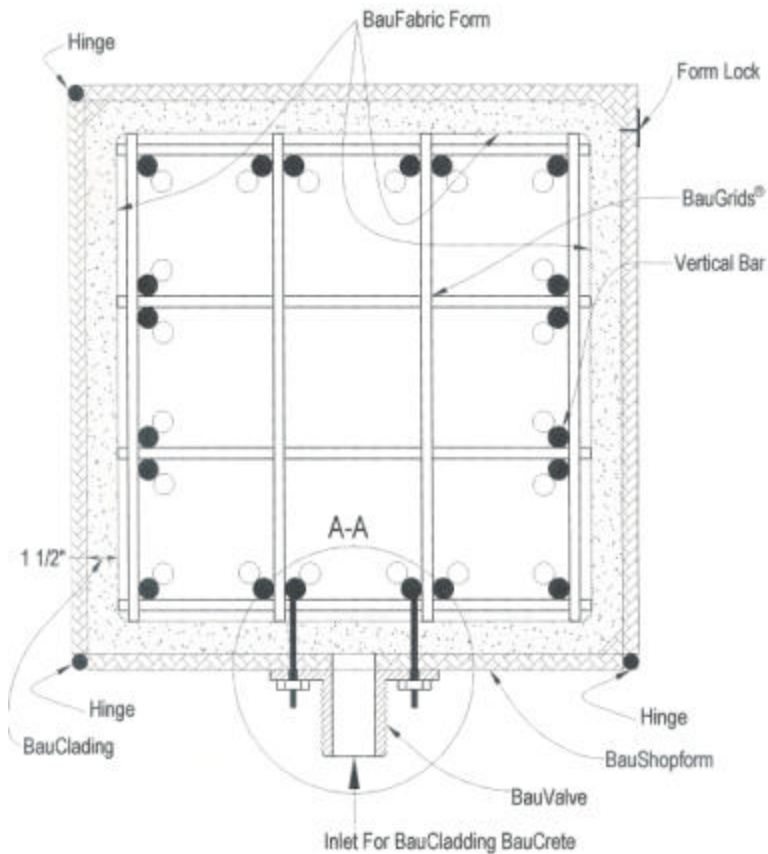


BauPreClad



BauPreClad is GridCages or BauCages that have a coating applied to the outside of the GridCages or BauCages prior to shipment to the field.

The BauPreClad is a finished surface that also serves as a stay-in-place form for bottom-up-pumped concrete placed through a BauValve at the bottom of the PreClad BauColumn. PreClad BauBeams can be fabricated in a similar manner off-site.

The PreClad BauColumns and BauBeams are hollow which makes them more economical for shipment and allows the use of lap splices for connecting which costs less and takes less time than connections using expensive and time consuming couplers.

The BauClad can have white cement and/or patterns. The BauClad material can be made to be very impermeable and to be very fire resistant. The BauClad will be installed over a BauFormFabric that will act both as a form and a fabric reinforcement.

The light PreClad BauCages will be shipped to the site where they will be quickly erected and connected with lap splices. The bottom-up-pumped concrete will then quickly fill the hollow void in the PreClad BauColumns and PreClad BauBeams to make a PreClad "BauFrame".

When the PreClad Column GridCage is hinge connected to the PreClad Beam BauCage a hinged PreClad BauTree BauFrame is created which is described in sections RD18 BauFrame and RD19 BauTree.