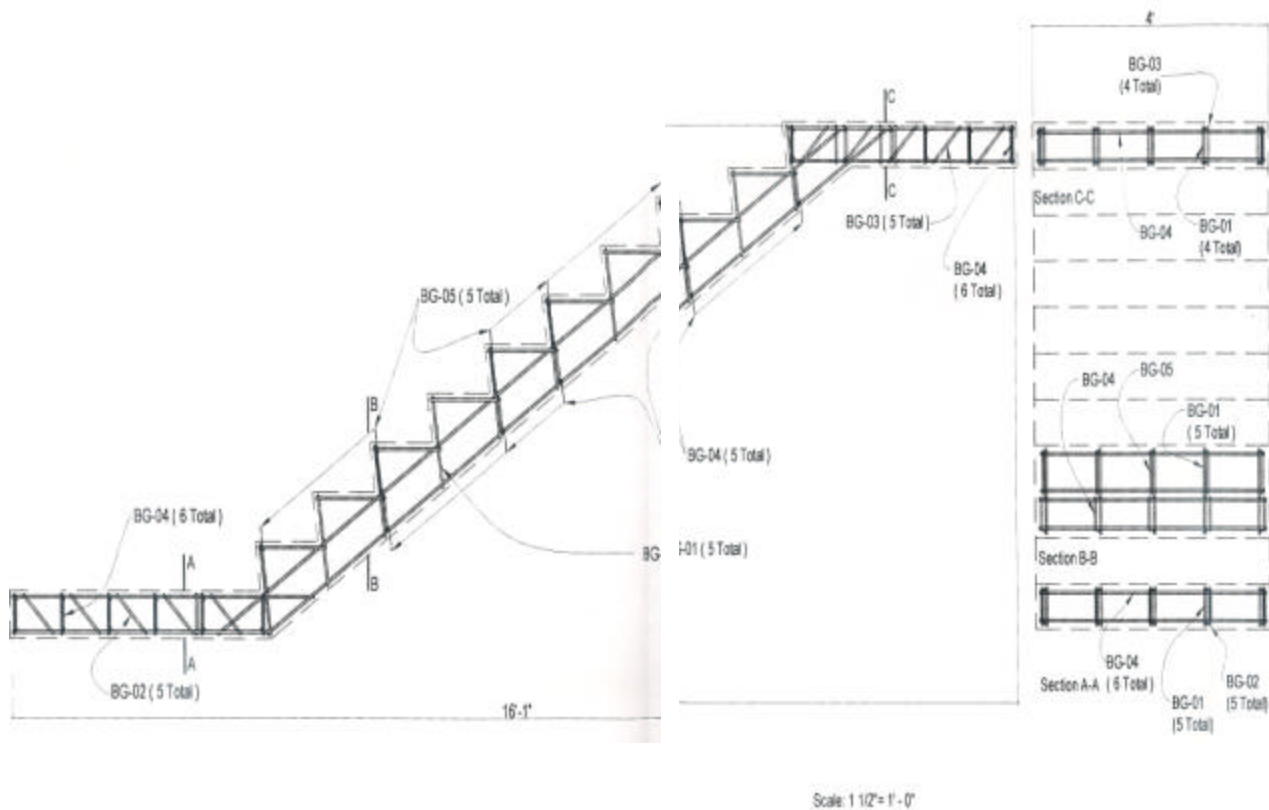


RD23 – BauStairs



The BauStairs can be shipped in BauBundled sets or as BauStair BauCages. The BauStair BauCages are composed of crossing BauLadders, where the transverse BauLadders fit inside the BauStringer.

PreFormed and PreClad BauStair BauCages can be shipped to the site as well. The BauStringers will be made using an adjustable BauMagFixture so that stairs with different rise and run can be easily produced from the same resistance-welding machine.

The PreFormed and PreClad BauStairs BauCage will be strong enough to support wet concrete using only minimal temporary shoring. Self-compacting BauCrete can be quickly bottom-up pumped into the BauStair PreFormed BauCage.

When the BauStairs are supported by BauFrames, a BauStrongStair is created, which is designed to resist gravity, wind and earthquake lateral forces.